



BAPTIST HEALTH®

FOUNDATION

Lexington



ANNUAL REPORT | 2021

**2021
BOARD OF
DIRECTORS**

- Bill Sisson**
President
- Trish Takacs**
Chairman
- Lee Carter**
Vice Chairman
- Stephen Oglesby**
Treasurer
- Janet Norton**
Secretary
- Mary Ann Garback**
Ex-Officio
- Kim Sweazy**
Ex-Officio

- Cyndi Allen
- Joseph Beavin
- James Borders, MD
- Stephanie Doom
- Jeffrey Fraley
- Doug Hacker
- Marta Hayne, MD
- Akash Hira
- Terri Jones
- Stephen Manella
- James Miller
- Becky Reinhold
- Brett Setzer
- Christine Stanley
- Rick Suffoletta
- Debbie Sutherland-Comley
- Lisa Tomassoni
- Ron Turner

STAFF

- Lori Matthews**
Foundation Executive
- Taylor McDonald**
Philanthropy Officer
- Karen Hutson**
Philanthropy Coordinator

Dear Friends,

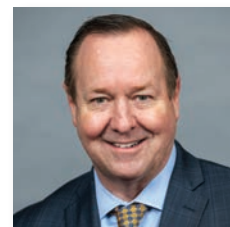
Thank you for your support of Baptist Health Foundation Lexington in 2021. Our Baptist Health hospitals were founded by compassionate people, just like you, who are striving to make their communities better by keeping families healthier. Today, Baptist Health Foundation Lexington continues this heritage of service and leadership by fostering partnerships to further enhance the quality of medical care and overall patient experience that is available within our community, ensuring that we are providing high-quality healthcare and meeting our community's needs.

Through gifts received last year, you made it possible for us to fund 21 projects, ranging from the purchase of two new EKG machines, to the completion of our playground at the Baptist Health Child Development Center. These projects allow us to meet the specific needs of individuals and families within our community.

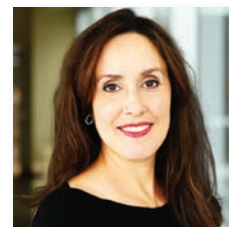
Over the last year, Baptist Health has made great efforts to bring you world-class care and unmatched compassion, close to home. Funds are raised throughout the year to provide perinatal bereavement cast mementos to help support grieving parents. Nearly 150 blood pressure cuffs and monitors were purchased to assist at-home patients with their day-to-day health maintenance checks. Baptist Health Lexington also introduced the Nursing Anne Simulator, which helps clinicians better understand clinical practices and provides modern nursing education.

Service lines at Baptist Health Lexington are directly impacted by every donor who chooses to support the Foundation. It's through your selflessness that Baptist Health is able to provide better and more innovative care to our region. Thank you for your generosity and support.

With gratitude,

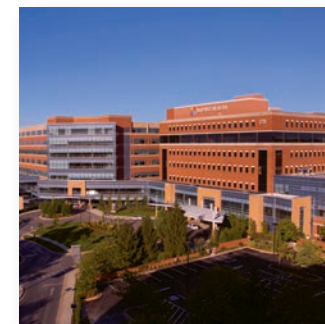
CHRIS ROTY
President
Baptist Health Lexington

LORI MATTHEWS
Foundation Executive
Baptist Health Foundation Lexington



176,032
Approximate number of
patients seen annually



**U.S. News Ranked
Hospital**



**Level III Neonatal
Intensive Care unit**



**"A" Rating for
Hospital Safety**



**Joint Commission's
Gold Seal of
Approval®**

MISSION

Baptist Health demonstrates the love of Christ by providing and coordinating care and improving health in our communities.

VISION

Baptist Health will lead in clinical excellence, compassionate care and growth to meet the needs of our patients.

VALUES

Baptist Health will live out its Christ-centered mission and achieve its vision guided by Integrity, Respect, Excellence, Collaboration, Compassion and Joy.

2021 FUNDED PROJECTS

The Baptist Health Foundation Lexington team and board of directors are pleased to announce that in 2021, \$155,770 was distributed in support of patient care. Funding was provided for:

- Patient Assistance Fund.
- Education & Development Laerdal Nursing Anne Simulator.
- Overhead surgical procedure light for Electro Physiology Lab.
- Baptist Health Lexington Hospital Medicine office renovation.
- Cancer Center professional education and staff development.
- Healing After Breast Surgery Program, Baptist Health Oncology & Rehabilitation Services Pathway.
- Perinatal Bereavement Program.
- Cancer Center patient transportation.
- Pulmonary Fibrosis Support Group.
- Preadmission testing vein finder and wheeled stands.
- Library Services Research Fellow.



President's Circle members Trish Takacs, Randall Vaughn and Lori Matthews at December's President's Circle event, featuring cardiology at The Signature Club of Landsdowne.

PRESIDENT'S CIRCLE

The President's Circle was established in 2019 to provide annual support and create partnerships with friends who share an interest in local healthcare. The President's Circle is Baptist Health Foundation Lexington's most prestigious annual recognition society. President's Circle members contribute \$1,000 to \$10,000 annually. Throughout the year, members are invited to attend special events to meet doctors, hospital leaders, and other philanthropically focused community members to learn about specific health issues and available treatments and services. In 2021, the President's Circle received support from 101 household members.

Working Together - Every Member, Every Year - The Possibilities are Endless.

THE LEGACY SOCIETY

BAPTIST HEALTH FOUNDATION LEXINGTON



PLANNED GIVING

Leaving a legacy with Baptist Health ensures we can continue to advance healthcare in our community for generations to come by helping us to improve the medical care we provide. When we know about your intentions, we can plan for your gift and amplify the impact it can make.

To ensure we best meet the wishes of our donors, we are happy to consult with donors, their families, legal professionals and wealth advisors. Together, we can develop a plan for giving that aligns with your specific interests, familial needs and financial considerations to ensure that your legacy gift is the most meaningful to you.

Whether or not you give to Baptist Health through available planned giving options, your generosity is greatly appreciated by those we are privileged to serve. We are happy to discuss your goals, help you learn more about ways to honor a loved one, or talk through the many ways you can make a planned gift. Planned gifts are truly the gifts that keep on giving and provide hope, ensure access, and allow us to meet the highest possible level of care for our patients now and for years to come.

WHY I GIVE

“ I began supporting the Foundation after I experienced firsthand the care that is provided on a daily basis at Baptist Health Lexington, as a patient. As a director at the Baptist Health Child Development Center, I have been the recipient of items that we would not have been able to purchase without the support provided by the Foundation. These items have helped make our department safer for the children and families we serve. ”

– Beth Morton, Director of Child Development Center



2021 FUNDED PROJECTS

- Bulletproof vests for security team.
- Patriotic patient recognition.
- Certification training.
- Radiation Oncology refrigerator for medication.
- Cardiac Rehab advanced certification.
- Intensive Care Unit beds.
- EKG machines for Emergency Care and Cardiology.

GIFT SUMMARY

UNRESTRICTED VS. RESTRICTED GIFTS



■ Unrestricted Gifts: \$245,127.49
 ■ Restricted Gifts: \$662,603.06
Grand Total: \$907,730.55

UNRESTRICTED GIFTS

\$245,127.49
 Mission Advancement

RESTRICTED GIFTS



Cancer Services
 \$71,767.33



Cardiology Services
 \$14,106.60



Baptist Health Hamburg
 \$132,430



NICU + Pediatric Services
 \$19,922



Breast Cancer Education
 \$25,000



Medical Education
 \$250,000



Employee Support
 \$39,194.27

Patient Assistance
 \$34,102.84

Not all restricted gifts are listed above.

ONCOLOGY SERVICES

HEALING BEYOND A DISEASE

Justin Evans was young, active and seemingly healthy, so he wasn't alarmed when he felt a lump under his collarbone. The 28 year old went about life as usual – working, enjoying married life, and spending time hiking and kayaking.

But then one night, Justin felt quite ill and feared it might be appendicitis. His wife took him to Baptist Health Lexington, where he underwent the first in a series of tests that ultimately would reveal he had stage 3 Hodgkin's Lymphoma.

"At Baptist Health Lexington, the quality of care was amazing," said Justin, who opted against seeking treatment at an out-of-town facility like Cleveland Clinic. "I literally could not have asked for anything more."

Within 30 minutes of his diagnosis, Justin was in the office of oncologist Lee Hicks, MD, and he began chemotherapy two days later at the Cancer Care Center at Baptist Health Lexington – just five minutes from his home.

"Justin was a soldier through it. He got through it very, very well," says Dr. Hicks, adding that Baptist Health Lexington's multidisciplinary approach combines advanced treatment and compassionate care. "This is about a healing that goes beyond current disease. It's about wellness. This is about bringing wholeness to a person that's had a great challenge in their life."

Baptist Health Lexington is a U.S. News & World Report-ranked hospital and a 2015 American College of Surgeons Commission on Cancer-accredited facility or Center of Excellence. As such, we are committed to using the most advanced therapies possible to prevent, diagnose and treat cancer.



1,949

Patients treated, approximate

8,605

Chemotherapy treatments

14,829

Radiation therapy treatments

Justin Evans, grateful patient, with wife, Katie.

CARDIOLOGY SERVICES

THE HEART OF HEALTHCARE

When Katie Guiney relocated from New York to Kentucky for her husband's job, finding the best-possible cardiac care was a top priority. Her longtime doctor recommended Gery Tomassoni, MD, an electrophysiologist at Baptist Health Lexington.

"I am so blessed to have landed where I did and to have Dr. Tomassoni be less than an hour away," Katie said. "He's just brilliant, he's an expert, and that I get him for my doctor is pretty amazing."

Katie has a rare genetic disorder in which scar tissue replaces normal heart muscle, resulting in an irregular heartbeat, passing out, and potentially causing the heart to stop.

Medication wasn't working, so Katie underwent a series of cardiac ablations at our Center for Atrial Fibrillation and Heart Rhythm Disorders. "I think the ablations were the key to everything," she said. "Dr. Tomassoni and his staff were incredible to me!"

The wife, mother and school psychologist is now symptom free and thriving – and her cardiology team at Baptist Health Lexington couldn't be happier.

"Katie is doing great. She's doing everything she ever wanted to do, and I'm so proud of where she is with things, and I'm so happy we were able to provide this medical care for her," Dr. Tomassoni said. "I might be a little biased, but I think that the Baptist system in Kentucky is by far the best in Kentucky, and is probably best in the nation as well."

Such positive patient interactions and outcomes are the result of a commitment to providing exceptional cardiovascular care – and it wouldn't be possible without the support of generous donors.



Katie Guiney, Heart Care success story, with husband, Craig and son, Sean.



502

Open-heart surgeries

1,683

Heart catheterizations performed

132

Transcatheter aortic valve replacement (TAVR) procedures, without a Watchman™ device

96

Watchman™ devices placed



MOTHER AND BABY CARE

3,500

Babies born at Baptist Health Lexington in 2021

479

Babies served in the NICU

10

NICU transports

A PERSONALIZED APPROACH TO LABOR AND DELIVERY

Baptist Health Lexington's personalized care approach means we'll work to customize a mom's birth experience as much as possible to meet her wants and needs. We focus on providing care, comfort and support through our amenities including:

- 17 private rooms, where moms can stay throughout their entire birthing process.
- Natural pain management options, including hydrotherapy tubs and birthing balls.
- Kangaroo care, which is skin-to-skin contact as soon after birth as is safely possible.
- Couplet care to keep moms and babies together as much as possible, right after birth.

SPECIALIZED CARE

Our level III Neonatal Intensive Care unit provides personalized medical care for babies affected by a range of health conditions and circumstances, from premature birth to rare medical conditions. The NICU has 32 private rooms so parents can bond with their babies while they receive the advanced care they need.

All elements of Baptist Health Lexington Mother and Baby Care are comfortable and offer evidence-based healthcare, so mothers and newborns are safe and supported during their stay. It's at the heart of our mission to ensure that every mother and baby receive exceptional service with the best possible outcome.



BAPTIST HEALTH HAMBURG

AN INTEGRATED CAMPUS OF THE FUTURE FOR OUR REGION

This is the largest and most ambitious healthcare project in central and eastern Kentucky within the past 25 years. This outpatient care project is about putting our patients first. Always. It's about extending what makes Baptist Health Lexington unique – our people – into a new era of innovation. It's about providing greater access, more convenience and advanced technologies to our community. The vision is bold, the outcomes are real, and the opportunity to transform how we all experience health and wellness services are remarkable. The construction of this new facility will help expand outpatient services for cancer, breast imaging and diagnostics, emergency care, cardiology, orthopedics and surgery.

PROJECT BENEFITS

- Provide easier access for eastern and central Kentuckians; reducing stress, travel times and inconvenience.
- Create a nonhospital-like environment that delivers high-quality care and a customized patient experience.
- Strive for green building, sustainability and energy efficiency.
- Ensure maximum flexibility for future growth through site infrastructure, as well as building design and construction. All buildings are designed to accommodate future expansion both vertically and horizontally.
- Provide the highest quality of patient-centered clinical services available.



Outpatient Multidisciplinary Cancer Center

Cancer's threats are well known and devastating. The journey is fraught with physical, mental, financial and spiritual barriers. It is with these obstacles in mind that this new outpatient center has been imagined. To overcome physical challenges, there will be advanced equipment, outstanding clinical expertise, progressive surgical procedures, and reliable treatment options. Combined with compassionate care, this is what separates Baptist Health Lexington from other facilities in our region.

The location and design of the facility will help to overcome accessibility concerns, while focusing on helping patients and their families return home, where they are most at ease. To support the emotional and financial journey, there will be personalized navigators, therapists and dietitians. The spiritual journey will be supported through our core values of **integrity, respect, compassion and joy**. This will be a setting of healing, hope and holistic care.

Breast Imaging Center

In healthcare, an image can be worth much more than a thousand words. The right image at the right time changes everything. For the people of central and eastern Kentucky and their families, a diagnostic center that puts personalization, comfort, and the most advanced imaging into an outpatient setting, could change the very course of their lives.

This center will support prevention and early detection of breast cancer by making patient access convenient and affordable. Through a commitment to provide accurate and timely biopsy results with service provided by highly trained physicians and technicians, the center will ensure a precise diagnosis that will lead to better treatment options. This facility is more than a breast imaging and diagnostic center, this is a place where comfort, reliability and prevention will change the future for the communities we serve.

Emergency Department

What patients and their families expect from their emergency department has changed. As a nation, we've seen death rates decrease due to advancements in technology and medical research, greater accessibility to high-quality services, and an integrated team-based approach that ensures fast, accurate communication leading to better outcomes. However, one issue has remained – overcrowding. The simple fact is that populations have outpaced expectations and the ability of healthcare to respond. Today, we have a chance to change that. This new Emergency Department will decrease overcrowding in an area where the population is growing, while also delivering the very best in modern emergency services.

Orthopedic Center

Mobility impacts almost every moment of our day. Our very quality of life hinges on our ability to freely maneuver comfortably. Orthopedic care is undergoing as much change as anywhere within the healthcare landscape. The reasons are simple; people are living longer, technology exists to improve our quality of life, and minimally invasive solutions have never been better or more affordable. Soon, senior adults are projected to outnumber children. This exceptional outpatient orthopedic center will provide our community with imaging, diagnostics, surgery, joint replacements, care for sports injuries, physical therapy, and exciting new innovations. In doing so, we will be able to bring a quality of life and mobility to every age group and every community.

“ *The Baptist Hamburg location will improve access for Lexingtonians and residents of surrounding counties to Baptist Health Lexington quality care. The innovative treatments that will be offered at this location are remarkable.* ”

– Firas Badin, MD, Baptist Health Medical Group Hematology & Oncology



PATIENT ASSISTANCE AND EMPLOYEE SUPPORT



PATIENT ASSISTANCE

The Patient Assistance Fund was established at Baptist Health Lexington to provide assistance with transportation, medication, and other medical-related items that may be a barrier to care.

\$34,102.84
donated in 2021

EMPLOYEE SUPPORT

The Employee Support Fund was established at Baptist Health Lexington to provide financial assistance to employees who are undergoing times of hardship that range from house fires or a spouse's job loss, to unforeseen medical expenses.

\$39,194.27
donated in 2021

WAYS TO GIVE

SUPPORT A CARE AREA

You may choose for your gift to benefit a specific care area within the hospital. Care areas include:

- Cardiology Fund
- Employee Support Fund
- Mission Advancement Fund
- Mother and Baby Care Fund
- Neurosurgery Fund
- Nursing Education Fund
- Oncology Fund
- Orthopedics Fund
- Patient Assistance Fund



IN HONOR OF OR MEMORY GIFT

Make a gift to any care area in honor or memory of a loved one, or in gratitude for a caregiver who provided exceptional care to you or a loved one.

PLANNED GIVING

A planned gift is a wonderful way to show your support and appreciation for Baptist Health Lexington and its mission, while accommodating your own personal, financial, estate-planning and philanthropic goals.



PRACTICING GRATITUDE FOR BETTER HEALTH & WELL-BEING

PROJECT GRATITUDE

Project Gratitude is collaboration between the Baptist Health Foundation and their communities to better understand the role gratitude can or should play in our culture and in a person's health journey. This project explores gratitude from the perspective of patients, a patient's family, care providers and their loved ones, community members and community leaders.

The outcome of this project may educate us on the science of gratitude, connect us through meaningful personal stories and insights, prepare us to act upon our gratitude, and may create new relationships or new ways of seeing the world around us. [Learn more at ProjectGratitude.com](https://ProjectGratitude.com).

NEW PARENTS GRATEFUL FOR COMPASSIONATE NICU NURSES

When Sammy Leslie checked out of Baptist Health several days after giving birth, her newborn son had to stay behind in the NICU. The special going-home onesie she'd packed would stay tucked in her suitcase, the car seat would sit empty in the backseat, and the nursery would remain quiet a little while longer.

It was a difficult day made easier by compassionate caregivers.

"A NICU nurse said, 'I know today may be hard for you and that this is not what you had planned.' This gave me permission to stop trying to be strong for a moment and feel my emotions. It was OK to not be OK," the first-time mom recalled. "She saw women like me every day, yet I was not just another patient to her. She was not just going through the motions, and she had not become numb to the human aspect of her job. She came to work every day because she truly wanted to make a difference in the world and help people like me and my baby. I now had someone I could trust, and it made leaving my baby behind a little bit easier."

Making matters even more challenging at the time, COVID prevented the couple's families from comforting them at the hospital. "The NICU nurses became our surrogate moms for those weeks," Sammy said. "They knew just how to comfort us and make the process as easy as possible. We were blown away by the amount of genuine care we were shown."

"Going into the NICU was the scariest moment of our lives, but we left feeling like we had gained family," she added. "This experience reminded me that our community is made up of good, kind people whom we can rely on and trust, and for that I am grateful."

“ You don't realize just how big of an impact a small act of kindness can have. ”

– Sammy Leslie, Grateful Patient

“ I'm very grateful to have access to quality healthcare. ”

– John Williams, Baptist Health Lexington Oncology patient



GRATEFUL FOR FAMILY, GOOD HEALTH AND QUALITY HEALTHCARE

John Williams has much to be thankful for in life – particularly his wife Sherry of 33 years, his three sons and his health. "I'm also very grateful to have access to quality healthcare," said the 58-year-old lawyer, who recently underwent cancer treatment at Baptist Health Lexington.

"I appreciate everyone who helped me during my treatment. All my questions were answered along the way," he said. "I know they see cancer patients all day every day, but I really felt like my case was important to everyone. I can't stress enough how important that was in a very stressful situation."

Just a few months before the pandemic hit, Williams underwent cancer treatment delivered with the advanced, non-invasive CyberKnife® System. Despite the challenges of battling cancer during a pandemic, Williams counts his blessings and is grateful for his good health today.

"I was impressed with how everyone – from the reception desk to the doctor's office – treated me like I was an important patient," he said. "It was a personal touch I haven't seen in most of my other experiences with doctors."

SHARE
YOUR GRATITUDE

Share your insights on gratitude or honor an individual who's made a difference in your life.

projectgratitude.com

“ *It’s an honor to serve my community through the work of Baptist Health Foundation Lexington. The work they are doing doesn’t only impact patients today, it will continue to benefit patients for generations to come.* ”

– Trish Takacs, Foundation Chair



BAPTIST HEALTH[®]

FOUNDATION

Lexington

SupportBaptistHealth.org/Lexington
1740 Nicholasville Road, Lexington, KY 40503
859.260.2569

