



**BAPTIST HEALTH®**

FOUNDATION  
Greater Louisville

*Serving Louisville and La Grange*



# ANNUAL REPORT





## 2022 BOARD OF DIRECTORS

- Larry Gray**  
President
- Clint Kaho**  
Vice President
- Andy Powell**  
Chairman
- Sue Tamme**  
Vice Chairman
- Steve Oglesby**  
Treasurer
- Justin Leighty**  
Assistant Treasurer
- Janet Norton**  
Secretary

- Ideisha Bellamy
- John Crockett
- Jerry Greenwell
- Robert Hook Jr.
- Margaret Keith
- Sara Lose
- Daniel McMahan
- Ramsey Nassar, MD
- Chris O'Bryan
- Andrew Pellino
- Frederick Robey
- William Roby Jr.
- Jerry Sims
- Mary Snook, PhD
- William Summers
- Edith Wells
- Guthrie Zaring
- Joan Zink

## STAFF

- Justin Leighty**  
Executive Director of Philanthropy
- Betty Sallengs**  
Philanthropy Officer
- Rachel Olson**  
Philanthropy Officer

Dear Friends,

Thank you for your support of Baptist Health Foundation Greater Louisville in 2022. Through our roles as president, we have gained a sense of the deep dedication and immense care that you have for your community, our community.

Through gifts received last year, you made it possible for us to fund several projects, ranging from the purchase of wigs for some of our cancer patients, to updating the emergency department at Baptist Health La Grange. These projects allow us to meet the specific needs of individuals and families within our community to ensure that we are providing them with high-quality healthcare in their own backyard.

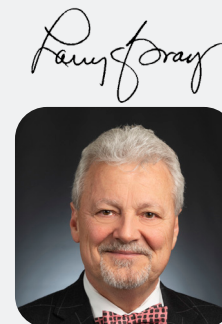
Over the last year, Baptist Health Foundation Greater Louisville has made strides to maximize the impact of your donated dollars through tireless efforts to meet the needs of our community. The purchase of convex array probes allows ultrasounds to have a wider field of view at a lower frequency. The purchase of Dexcom G6 Continuous Glucose Monitoring (CGM) Systems prevents the need for fingersticks for insulin-dependent patients with Types 1 and 2 diabetes. Our organization also provided assistance for our employees and patients undergoing extreme hardship.

Our goal as presidents of Baptist Health Louisville and Baptist Health La Grange is straightforward: We want to affect growth. As we reflect on the achievements of our hospitals and our Foundation, the potential that we have for continued growth and development is evident. As an organization, we aim to continue the heritage of service and leadership while fostering partnerships to further enhance the quality of medical care and overall patient experience available within our community.

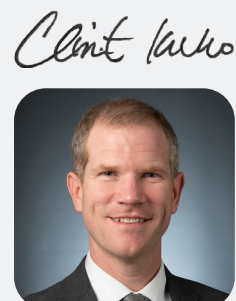
As we work to cultivate new relationships with regional partners, our most important relationships are with you. Through this report, we want to offer you a transparent look into the work that we are doing to best serve those who rely on us for their employment and to maintain their health. We recognize the importance of every donor who chooses to support our Foundation. We've seen how far a dollar can go to make a difference in the lives of our friends, neighbors, colleagues and family members. It is through the selflessness of those with a heart for giving that we are able to provide better and more innovative care to our region.

We are grateful for the generosity and support of those who are helping us to inspire hope and drive health for future generations. We invite those who are just learning about what we are doing to be a part of the change we are having on the lives of those within our community. Together, we are a force for good.

In gratitude,



**LARRY GRAY**  
President  
Baptist Health  
Louisville



**CLINT KAHO**  
President  
Baptist Health  
La Grange

## MISSION

Baptist Health demonstrates the love of Christ by providing and coordinating care and improving health in our communities.

## VISION

Baptist Health will lead in clinical excellence, compassionate care and growth to meet the needs of our patients.

## VALUES

Baptist Health will live out its Christ-centered mission and achieve its vision guided by Integrity, Respect, Excellence, Collaboration, Compassion and Joy.



**BAPTIST HEALTH  
LOUISVILLE**



**BAPTIST HEALTH  
LA GRANGE**

# 137,960

Approximate number of patients seen annually

No. 1 hospital in metro Louisville

Magnet® designated facility for nursing excellence

Get with the Guidelines-Stroke Gold Plus Award

The Joint Commission Hospital accreditation



# 57,926

Approximate number of patients seen annually

American Academy of Sleep Medicine Center

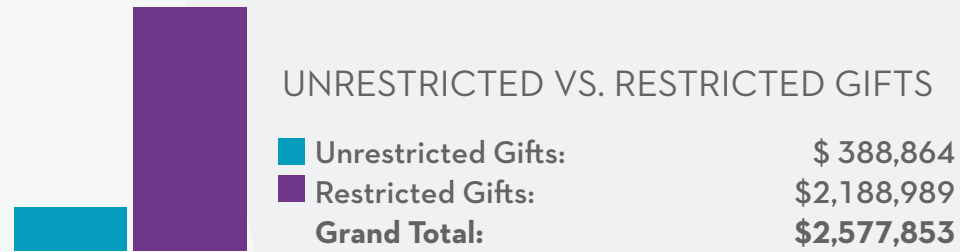
“A” Rating for Patient Safety – The Leapfrog Group



## 2022 FUNDED PROJECTS

- Employee support
  - More than 75 employees assisted
  - \$59,615 disbursed
- Staff education
  - 15 staff members received further education, training and certification
  - \$44,683 disbursed
- Patient assistance
  - 92 patients assisted
  - \$201,961 disbursed
- Emergency assistance relief
  - 9 employees assisted
  - \$4,404 disbursed
- \$330 dispersed for glucometer starter kits
- Food for the food pantry
- \$4,352 dispersed for hemoglobin test kits
- \$4,150 dispersed for handheld thermometers
- \$1,167 dispersed for breast pumps
- Oxygen blenders
- Epidural positioner
- \$22,500 dispersed for wigs for cancer patients
- Two wheelchairs
- 22 massages for cancer patients
- \$1,500 dispersed for head scarves for cancer patients
- \$146 dispersed for educational booklets for breast cancer patients
- Evacuation sled
- Medical supply cart
- Meal delivery cart
- Convex array probes
- Two infrared goggles
- Dexcom G6 Pro CGM system
- Cancer prevention block party
- Chemotherapy kit bags
- Surgery VR equipment
- Educational models for oncology department
- Patient transportation
  - \$32,706 dispersed for cancer transports
  - \$70,894 dispersed for hospital transports

## GIFT SUMMARY



### UNRESTRICTED GIFTS



### RESTRICTED GIFTS



\*All gifts here are for Louisville and La Grange total combined. Not all restricted gifts are listed above.



Monica Brown, Reid Brown, MD, William Summers and Andy Powell attending the President's Circle event at Rabbit Hole Distillery.

## PRESIDENT'S CIRCLE

**Working Together - Every Member, Every Year - The Possibilities are Endless.** Established in 2018, the President's Circle is comprised of our closest circle of friends – individuals who share an interest in local healthcare and provide annual philanthropic support. The President's Circle is Baptist Health Foundation Greater Louisville's most prestigious annual recognition society with members who contribute \$1,000 to \$10,000 each year. Throughout the year, members are invited to attend special events where they meet physicians, hospital leaders, and network with other philanthropy focused individuals to learn about specific health issues, service line enhancements and available treatments. In 2022, the President's Circle received support from 189 household members.

## PLANNED GIVING

**Your contribution can provide many solutions.**

Leaving a legacy with Baptist Health Greater Louisville ensures we can continue to advance healthcare in our community for generations to come by helping us to improve the medical care we provide. When we know about your intentions, we explore your gift opportunity and amplify the impact it can make. Planned gifts are truly the gifts that keep on giving and provide hope, ensure access, and allow us to meet the highest level of care for our patients now, and for years to come.



“ I am a pastor, so I don't have the kind of resources that others had, but I knew that there was something I could do. My wife and I made the decision to leave an estate gift that we could plan for to causes we felt drawn to. We may not have the cash on hand, but we know that it will get where it needs to go when the time comes. I believe in what Baptist is doing. I especially believe in the leadership and advances in Baptist Health Louisville. Their Christ-centered mission and commitment to patients is something that I want to support. I have confidence in the stability and direction of our hospital system, and I believe healthcare is more prevalent now than ever as they continue to work to lead us out of a pandemic-driven world. ”

– Rusty Ellison, planned giving donor





## LOUISVILLE

# 1,768

Patients treated, approximate

# 17,945

Chemotherapy treatments

# 14,336

Radiation therapy treatments

## LA GRANGE

# 116

Patients treated, approximate

# 1,199

Chemotherapy treatments

# ONCOLOGY SERVICES

## CANCER: A DISEASE THAT DOESN'T DISCRIMINATE

Odds are you know or are related to someone who has or has had cancer. Cancer does not discriminate based on age, religion, gender, or any other factors. High-quality oncology care is essential to surviving a cancer diagnosis. Baptist Health brings you advanced cancer care, right here in your corner of the world. Here, you have access to the latest advancements in diagnostics and treatments – including clinical trials – delivered with skill and compassion by experienced cancer specialists. From the moment you walk through our doors, you will be surrounded by a dedicated support team to guide you, comfort you and help you every step of the way.

Baptist Health is known for having the most advanced adult cancer programs in the region in terms of quality of care, outcomes and patient safety. Our cancer centers provide comprehensive diagnostic and treatment options for a wide range of cancers, including complex and rare conditions.

At Baptist Health, we not only focus on fighting your cancer with science and medicine, but supporting your mind, body and spirit during your cancer journey. We offer personalized support that can help you better manage the challenges cancer poses to your health, emotional well-being, finances and more.

# PSYCHOSOCIAL ONCOLOGY

## TREATING THE WHOLE PATIENT

Treating the whole patient, not just the disease, is the most compassionate and effective approach to cancer care. This pursuit has led Baptist Health to create the Supportive Oncology Program at the Charles and Mimi Osborn Cancer Center. The result is a robust network of supportive care professionals, including mental health providers, advanced nurse practitioners with psycho-oncology and survivorship expertise, social workers, a physician geneticist, nurse navigators, nutritionists and massage therapists. In addition, we care about patient comfort by providing cold caps to help minimize hair loss, customized wigs and more.

In recent years, Baptist Health established Cancer University, an incredible way to provide a learning environment to assist anyone impacted by cancer. Cancer University provides the knowledge and information necessary to navigate the journey from diagnosis and treatment to survivorship. This dynamic program empowers participants to explore the art of living with cancer, while helping them maximize their quality of life – often leading to improved outcomes.

*“Baptist Health provides access to specialized behavioral health and psychiatric care, along with the ability to coordinate that care with patients’ medical providers. This support is particularly significant given that there are such limited resources in the community.”*  
– Mary Helen Davis, MD, Psychiatrist and Psychosocial Oncology Consultant

# CARDIOLOGY SERVICES

## ASKING THE RIGHT QUESTIONS TO IDENTIFY THE PROBLEM

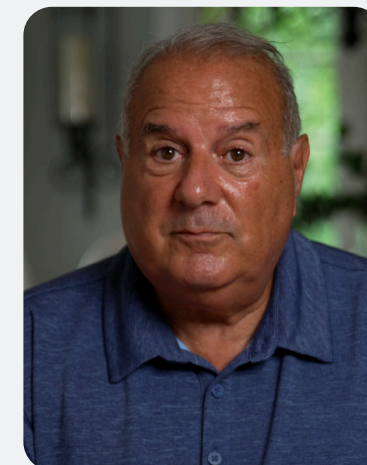
“I’m going to save your life.” These were the last words that John Casconi remembered as he was being rushed into the emergency department and informed that he was having a heart attack. John happened to bump into Bill Dillon, MD, the doctor who would find a 99% blockage in the “widow-maker” artery and who would put a stent in his heart, right before he lost consciousness.

John has always known his family has a long history of stroke and heart attack, but it wasn’t until he couldn’t grip his pen during a meeting at work that he found his name added to that list. He had been struggling to catch his breath for the last 24 hours and had credited it to being out of shape until he lost the full mobility of his hand. He called his personal physician and he told him, “If you’re going to have a heart attack, the place to do it is at Baptist Health.”

It has been eight years since John found himself on an operating table, and he truly believes that the doctors and staff at Baptist Health saved his life.

“They asked me the right questions, they identified the problem, and they immediately set to work to fix it so I could still be here for my family and so history wouldn’t repeat itself,” he said.

*“They asked me the right questions, they identified the problem, and they immediately set to work to fix it so I could still be here for my family and so history wouldn’t repeat itself.”*  
– John Casconi, grateful patient



# 463

Open-heart surgeries

# 1,833

Heart catheterizations performed

# 149

Transcatheter aortic valve replacement (TAVR) procedures, without a Watchman™ device





2,856

Babies born at Baptist Health Louisville in 2022

312

Babies born at Baptist Health La Grange in 2022

316

Babies served in the NICU



## MOTHER AND BABY CARE

### A PERSONALIZED APPROACH TO LABOR AND DELIVERY

Baptist Health Louisville’s experienced maternity care staff delivers nearly 3,000 babies each year. Baptist Health Maternity Care has a passion for helping moms live out the positive labor and delivery experience they imagine.

From a staff who genuinely cares about the patient experience, you’ll feel the difference in our approach to maternity care as we support mothers and infants through the delivery process, initial bonding, and first stages of life. We support your birth goals, whether that means helping you work through labor naturally or adapting to your changing wishes.

We practice kangaroo care, which means we support skin-to-skin contact as soon as possible after birth. Because we delay the baby’s first bath, moms get more bonding time right after delivery. This often means new parents can participate in the precious moments of your baby’s very first bath time.

Our private rooms accommodate both parents and newborns so babies can stay with their moms as much as possible. We follow the science of what’s best for moms and babies, with a hometown feel that will allow you to feel connected to staff, supported through every step, and guided on the journey of your expanding family.

## ORTHOPEDICS

### RELIABLE CARE YOU CAN COUNT ON

When you spend your life sharing valuable lessons and knowledge that you feel can benefit others, it is easy to maintain that same mindset after you enter retirement. That is the case of Vicki Receveur, a retired teacher, who now focuses on educating others about healthcare.

When Vicki began seeing a chiropractor for what she thought was an issue with her sciatic nerve, she didn’t anticipate learning that she had osteoarthritis. She found that her diagnosis, combined with very little cartilage in her hip joint, required surgery, and Baptist Health was there to support her through treatment and her healing process.

“It has been seven weeks since my surgery and I am doing very well,” said Vicki. “My husband and I have nine wonderful grandchildren and I am very active in church. It is important to me to get back into the swing of things. From my first appointment with Reid Brown, MD, to physical therapy sessions, I have been supported, and when you’re happy about something, you tell people about it.”

Born after World War II, Vicki recalls that there are many individuals her age who require cardiac, cancer and orthopedic care, and she wants them to be able to receive the same level of care that she did.

“Baptist Health hires people who are kind and helpful, and the needs of the patient is why they’re there,” said Vicki. “You can sense that. I pay attention to people who are doing what they can to help. With each encounter and each appointment, people were kind, helpful, and willing to answer questions. You appreciate the connection and feel like more than just another patient.”



Reid Brown, MD

Baptist Health Medical Group  
Orthopedics



BAPTIST HEALTH  
LOUISVILLE

5,663

Individual outpatients

1,146

Individual inpatients

BAPTIST HEALTH  
LA GRANGE

762

Individual outpatients

77

Individual inpatients



# YOUR DOLLARS AT WORK

## THROUGH YOUR GENEROUS DONATIONS AND GIVING SPIRIT, YOU ARE TOUCHING LIVES EACH DAY

“I recently had a patient who had moved back to Kentucky during her pregnancy with her two young kids to escape a domestic violence situation,” said Callie Simkoff, BSN, RNC-OB, maternal nurse navigator for Baptist Health Louisville and Baptist Health La Grange. “She is currently living with her grandparents, and she is a high-risk pregnancy. She is trying to care for two young kids and make ends meet.”

Simkoff’s patient does not have a car and has had to rely on transportation available through her insurance to get to her multiple checkups each week.

She has explored all avenues allowed in her Medicaid plan to help her use benefits to prepare for her third child. She is allowed to order two personal items per month and has been using that to order two packs of diapers on the first day of each month to stock up before her impending delivery.

“I sent her a list of local infant resources,” said Simkoff. “She waited until her grandfather had enough gas money to drive her downtown and take her. She was grateful for the clothing, diapers and bottles they gave her, but she was unable to get a car seat to safely transport her child to future medical appointments.”

Through the generosity of donations to our Foundation, Simkoff applied for patient assistance to allow her to provide a car seat and a pack and play. As a nurse navigator, she knew how important safe sleep practices and follow-up appointments are for infant children.

“I am blown away by the generosity of people within our community and their willingness to help complete strangers,” said Simkoff. “The hearts of those who give to the Foundation are so special. They are helping people through every stage of life. This woman has worked very hard during her pregnancy to take care of herself, her children, and to start over despite the great challenges she has faced. I want those that donate to know the difference they’ve made today and the difference they make in the lives of our patients every day, even when they cannot see it.”



“ *I want those that donate to know the difference they’ve made today and the difference they make in the lives of our patients every day, even when they cannot see it.* ”

– Callie Simkoff, BSN, RNC-OB, maternal nurse navigator for Baptist Health Louisville and Baptist Health La Grange

# NURSING EXCELLENCE FUND

## FUND FOR NURSING EXCELLENCE

Nurses are at the center of our healthcare experience. Time and time again, nurses serve as an example of compassion, collaboration and joy, by caring and advocating for patients and their loved ones. The Fund for Nursing Excellence supports our nurses by providing funding for education, research and equipment. In turn, they can deliver innovative healthcare to all of us.

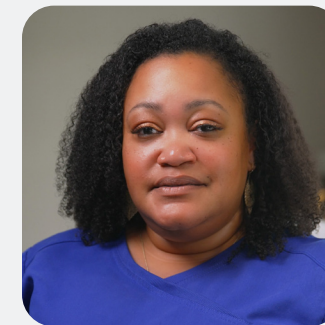
“ *The nurses at Baptist are unique. I want us to go to a higher level because our patients deserve it. Continued education for nurses is important. They do far more than I do. I set the plan; they carry it. I feel passionate about empowering our nurses. They are the backbone of our team.* ”

– Ramsey Nassar, MD



# WHY I WORK HERE

## A PLACE WHERE YOU CAN BE FREE TO BE YOU



Mary Davis, nurse manager for neuro telemetry, knew she wanted to work at Baptist Health after her father was treated in the Charles and Mimi Osborn Cancer Center. During his final days, one of his nurses came by and sat with him to pray. It impressed Mary so much that she moved to Kentucky to be a part of the Baptist Health team.

“Part of Baptist’s motto is about serving Christ,” said Mary. “This is the first place I worked where it’s in the mission to serve Christ. It’s exciting and the love of Christ is exuded here. We don’t force it onto people. Just knowing you can be free to be who you are and express the love of Christ. We support others in their beliefs. This is not a place that shuns people’s expressions of faith.”

Mary feels supported by Baptist Health through opportunities for continued education, the ability to get certified in your specialty, and that each unit has an educator on staff.

“Nurses are the doers of healthcare,” said Mary. “We’re the frontliners. A nurse is going to touch every patient in every setting. That’s what makes us unique. If you educate nurses and provide them support, you’re supporting the community and the patient. The better your caregivers are prepared, the better your care will be.”



# HONOR A Caregiver



## WHEN THANK YOU ISN'T QUITE ENOUGH

Have you ever had a caregiver who made you feel like more than just a patient? Maybe they held your hand while you heard difficult news or joyfully celebrated with you as you held your newborn child.

With the introduction of our Honor a Caregiver program, you can celebrate the men and women who have impacted your life beyond treatment and express your gratitude for receiving extraordinary care. When you make a monetary contribution in the name of a caregiver who has touched your life, they will receive recognition and special mementos to commemorate the exceptional care they work to provide.



TO MAKE A GIFT OR TELL US YOUR STORY, SCAN THE QR CODE.

“ I was on the table and a nurse was speaking with me and put a hand on my shoulder. It was a grounding experience. The emotion was palpable. No one can teach this kind of care. The level of comfort that it provided me was invaluable. Baptist Health is more than a hospital, it is a culture of grateful patients, giving providers and support during the times that people really need it. ”

– Gary Faltin, grateful patient



## PATIENT ASSISTANCE AND EMPLOYEE SUPPORT



### PATIENT ASSISTANCE

The Patient Assistance Fund was established at Baptist Health Louisville and Baptist Health La Grange to provide assistance with transportation, medication, and other medical-related items that may be a barrier to care.

**\$58,893**

donated in 2022

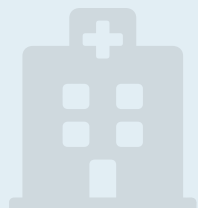
### EMPLOYEE SUPPORT

The Employee Support Fund was established at Baptist Health Louisville and Baptist Health La Grange to provide financial assistance to employees who are experiencing times of hardship, ranging from house fires or a spouse's job loss, to unforeseen medical expenses.

**\$53,707**

donated in 2022





## SUPPORT A CARE AREA

You may choose for your gift to benefit a specific care area or fund. Funds include:

- Cardiology Fund
- Congestive Heart Failure Patient Assistance
- Employee Support Fund
- Mission Advancement
- Mother-Baby Fund
- NICU Fund
- Nursing Excellence Fund
- Oncology Fund
- Orthopedic Fund
- Patient Assistance Fund
- Psychosocial Oncology Fund

## TRIBUTE GIFTS

Make a gift to any care area in honor or memory of a loved one, or in gratitude for a caregiver who provided exceptional care to you or a loved one.

## WHY I GIVE

“Knowing that I am helping future generations of mothers, organ donors, children and patients across the spectrum is important to me. Guaranteeing that my community has what it needs to better care for those needing medical treatment can be the difference between life and death. Every dollar adds up and those dollars help to provide physicians with the medical tools they need to save lives. That life could belong to my husband, my friend or my neighbor – and I don’t think there is anything more valuable than that.”



– Sue Tamme, Baptist Health Foundation Greater Louisville board member

# PROJECT GRATITUDE

## GRATITUDE IS A POWERFUL FORCE

When Edward Berry was admitted to Baptist Health La Grange with COVID-19, it was the start of a frightening journey. Escalating symptoms landed him in the Intensive Care unit, where he encountered nurse manager Tiffany Payton – one of many healthcare providers for whom he is grateful.

“I’ll never forget her many acts of love and courage to minister care to me in the ICU when she and her nursing staff were literally putting their lives on the line to help me,” he said.

Edward tries not to miss an opportunity to express his gratitude each day, whether that’s through something as simple as a smile, hug, handshake or kind words. “I feel that gratitude can transform a community,” he said. “When we take action to express and show our appreciation to others it is a powerful force.”

He also believes gratitude was an important part of his healing, recovery and now restoration, saying: “I have so much to be grateful for, and I want to grow in the grace of gratitude each day.”

And though Edward is grateful for many aspects of life, he is most thankful that “God’s generous grace” has allowed him more time on Earth to fulfill His purpose. “God created us for community, and without it, we miss out on the richness of life and the sustaining strength that God has made available in the Body of Christ.”

“I’ll never forget her many acts of love and courage to minister care to me in the ICU when she and her nursing staff were literally putting their lives on the line to help me.”

– Edward Berry, grateful patient



SHARE YOUR  
GRATITUDE

Share your insights on gratitude or honor an individual who’s made a difference in your life.

[projectgratitude.com](https://projectgratitude.com)





“ Everyone can play a role in making a difference. From assisting patients in need to providing updated equipment, there are numerous opportunities to impact lives. ”

— Andy Powell, Board Chairman  
Baptist Health Foundation Greater Louisville



**BAPTIST HEALTH®**

FOUNDATION  
Greater Louisville

*Serving Louisville and La Grange*

SupportBaptistHealth.org  
4007 Kresge Way, Louisville, KY 40207  
502.896.7475

2022